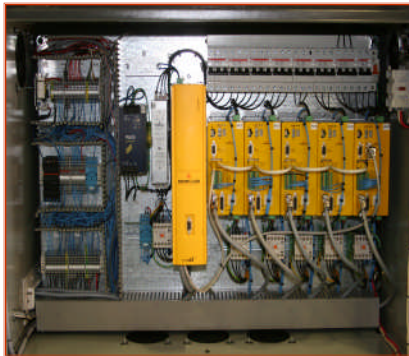
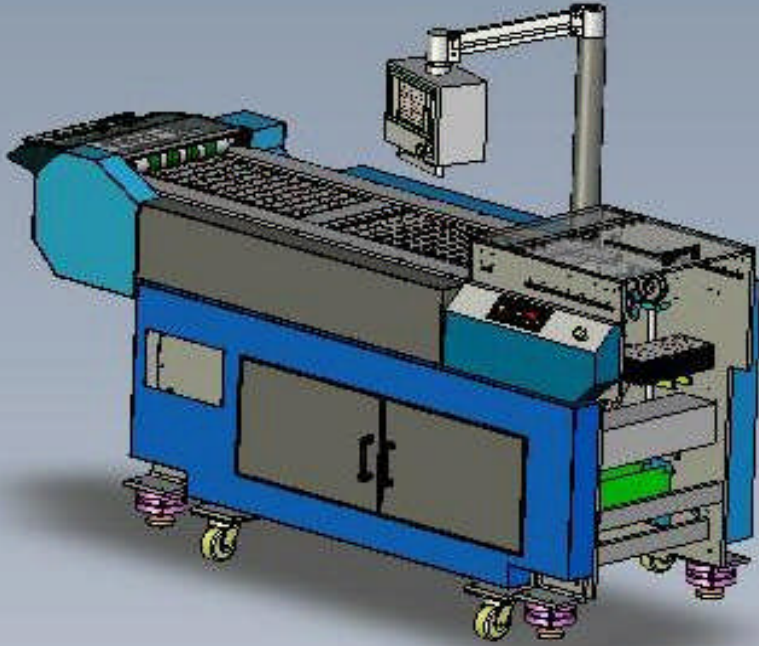


INTEGRATED **-WEB** FINISHING SYSTEMS

Integrated Web Finishing Systems

(Formerly JetWeb USA)
is the leading supplier of
Integrated Inline & Offline
Web Finishing Machines
and Systems providing
equipment globally to
the printing industry for
more than 25 years.

INLINE STACKER



i-WEB DIRECT DRIVE SERVO SYSTEM

The latest technology for
dynamic operation &
superior performance.

hi-SPEED STACKER BANDER

Provides accurate & reliable stacking
and banding at high press
speeds with low stack counts.



hi-Tech Color Touch Screen

Incorporates the latest technology in
controlling all stacker functions and
allows remote access to all machinery
in the line from a common location.

hi-PERFORMANCE BANDER

Superior, predictable high speed
bander at speeds up to 35 bands /
minute.



Integrated Web Finishing Systems 13 Robbie Road, Avon, MA 508.580.5809

info@i-webus.com

STACKER SPECIFICATIONS

The Stacker has been designed to keep up with the high inline speeds, while still being able to provide small batch counts where necessary. The Stacker is easily adjusted for a variety of inline products. The Stacker is portable and can be located in alternate locations. In cases where two-stream operation is a requirement, two units with a stream separation unit would be required. The machine includes an integrated high speed bander. The ultra-sonic bander is designed for heavy-duty use where multiple hourly cycles are required in multiple shift applications. The banding system uses either plastic or paper material, and comes standard with an arch for 1 1/4 inch wide banding. The bander can be detached and used as a stand-alone bander.

INLINE STACKER FEATURES & PERFORMANCE SPECIFICATIONS

Minimum width = 3 1/2 Inches, Maximum width = 9 1/2 w/band & 11 Inches w/o band.

Minimum bundle cycle time = 2 seconds. (30 Bands per minute). Bander will consistently band at speeds up to 35 Bands per Minute (Paper or Plastic).

Minimum Stack Count dependent upon speed. See chart.

Maximum Stack Height = 5 1/2 Inches.

Product counts will be within 1 piece for continuous count stacks.

Product separation for sorting will be precise with printed mark.

Input delivery belt with integrated waste divert.

Automatic floor jack and caster assembly for easy set-up and relocation.

High speed sensors for counting and speed control.

Stream Separator for interruption and gapping of the shingled stream.

Motion control system utilizes full servo control with integrated operator HMI.

Utility requirements; 100 PSI Air; 480VAC, 3 Phase, 30 Amp Electric with disconnect

Count & Batch Specifications; Calculations **are based on 1 stream – 1 up operation.**

If 2 or 3 streams are stacked; Min batch counts double or triple from #'s shown.

Stack Count vs. Press Speed

<u>FPM</u>	<u>400</u>	<u>500</u>	<u>600</u>	<u>800</u>	<u>1,000</u>	<u>1200</u>
<u>IPH</u>	<u>12,658</u>	<u>15,823</u>	<u>18,987</u>	<u>25,316</u>	<u>31,646</u>	<u>37,975</u>
Min Batch Count; 2X	12	15	19	25	36	44
Min Batch Count; 3X	19	23	28	38	55	66
Min Batch Count; 4X	25	31	37	49	73	87