

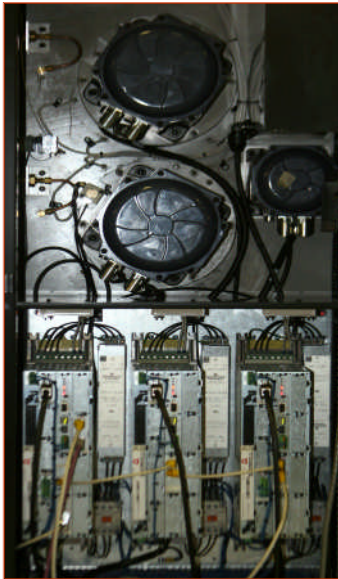
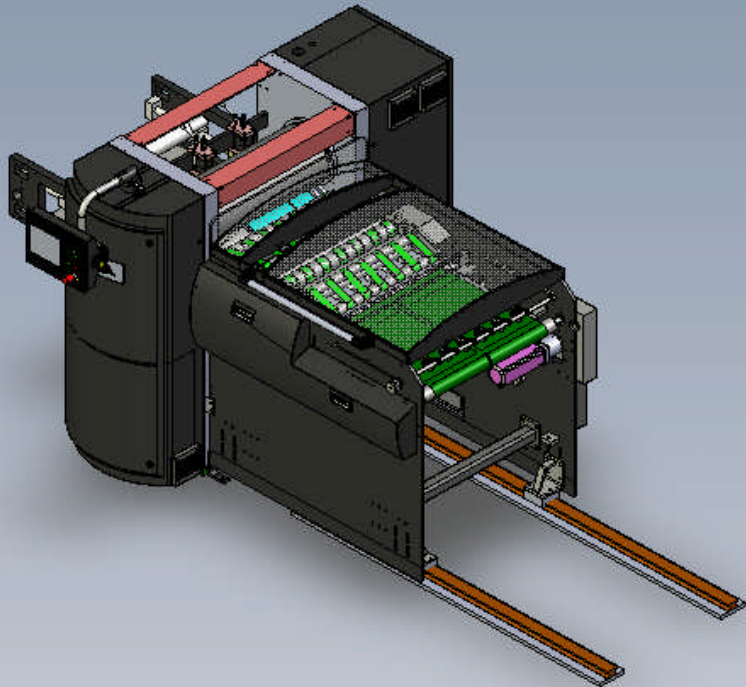


## Integrated Web Finishing Systems

(Formerly JetWeb USA)

is the leading supplier of Integrated Inline & Offline Web Finishing Machines and Systems providing equipment globally to the printing industry for more than 25 years.

# ROTARY CUTTER

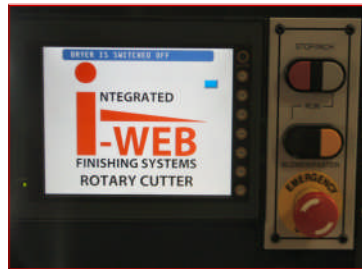


### i-WEB DIRECT DRIVE SERVO SYSTEM

The latest technology for dynamic operation & superior performance.

### hi-SPEED BELT TAKE-AWAY

Provides positive product removal with on the run positioning and servo speed adjustments.

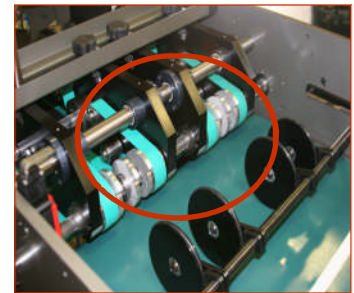


### hi-Tech Color Touch Screen

Incorporates the latest technology in controlling all Cutter functions and allows remote access to all machinery in the line from a common location.

### hi-PERFORMANCE TAIL KICKER

Superior, predictable high speed delivery system with positive & precise timing via servo.



Integrated Web Finishing Systems 13 Robbie Road, Avon, MA 508.580.5809  
[info@i-webus.com](mailto:info@i-webus.com)

# ROTARY CUTTER SPECIFICATIONS

The Rotary Cutter produces infinitely variable-sized products in lengths of 1, 1/2, 1/3, 1/4 and 1/5 of the press repeat in one or two streams. Finished products are produced from a plow-folded web chop cut or with bleed and gap trims removed. The cutter incorporates infeed with plow assist idler, variable speed servo driven pull roll, and cutting section with continuous surface anvil. The knife blocks are easily positioned to any location onto the knife cylinder to produce any size product utilizing motorized positioning system with telescoping positioning pins. The knife is held in position with a knife clamp. Trim is retained within the cutting block then ejected into a trim evacuation hood at the bottom of the machine. The delivery is a multi-stage unit with independent speed adjustments for each stage and integrated servo driven tail kickers. The delivery rolls out providing access for make-ready.

## INFEEED MODULE

Easy operator accessibility  
Fold assist pivoting roller mechanism  
Optional shear slitter

## CUTTING MODULE

Servo driven pull roller with pneumatic nips  
Continuous-surface, chromed hardened anvil cylinder  
Anvil Cylinder is phase adjustable to knife cylinder  
360 degree circumferential phasing  
Thermal stabilization system

## CUTTING MECHANISM

Single-cylinder knife/ejector make-ready  
Infinitely variable knife positioning around cylinder  
Motorized computerized knife positioning system  
Short or full-width re-useable knives  
Self-contained trim ejection system  
Positive, bottom-side ejection

## DELIVERY MODULE

Modular rollaway design for easy operator access knife blocks  
Belt type product pullout modules  
Servo driven Tail Kicker  
3-stage delivery system  
Variable-speed delivery conveyor

## DRIVE SYSTEM

AC Direct Drive Servo Motors  
Touch screen control panel  
Hi-Resolution motor encoder  
Each cylinder equipped with own motor

## OPTIONS

- **AUTOMATIC CUT\_OFF CONTROL**
- **SHEAR SLITTER**

